



## POWDERY MILDEW, MEALY BUG CONTROL IN GRAPES WITH SPRAY OIL

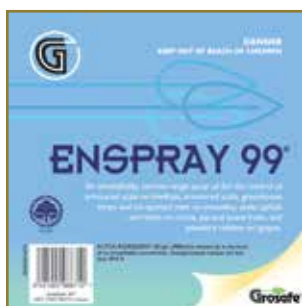
### EnSpray 99® Paraffinic Oil

Active Ingredient: 821g/L (980ml/L) mineral oil in the form of an emulsifiable concentrate. Unsulphonated Residue not less than 99.0% (typically 99.8%).

Controlling powdery mildew and mealybugs are two problems facing many grape growers, but with ENSPRAY 99 they now have the option of using one chemical to control both.

Mealybug control is becoming more difficult with a limited number of chemicals available for control.

#### PRODUCT OVERVIEW



**Grosafe** ENSPRAY 99 is a highly refined iso-paraffinic oil with biorational pesticidal properties including:

**An Insecticide:** Effective across a range of cotton and horticultural sucking pests.

**An Adjuvant:** A biological and chemical insecticidal carrier with unique sticking, spreading and UV protective features.

**Behaviour Modifier:** Deters feeding and/or oviposition (egg laying) behaviour of a range of key agricultural and horticultural pests. Suitable across a range of crops, pests and diseases, and spraying conditions.

**A Fungicide:** Effective stand-alone fungicide across a range of crops (e.g. Powdery mildew in grapes)



Mealy Bug

ENSPRAY 99 represents the most advanced attempt yet to provide growers with a product capable of managing multiple, unrelated pests or diseases simultaneously.

#### CONTROL OF POWDERY MILDEW, MEALYBUGS IN GRAPES

Controlling powdery mildew and mealybugs are two problems facing many grape growers, but with ENSPRAY 99 they now have the option of using one chemical to control both.

Mealybug control is becoming more difficult with a limited number of chemicals available for control.

**GROSAFE CHEMICALS LTD**  
20 Jean Batten Drive, Mt Maunganui, 3116  
PO Box 14 450, Tauranga 3143, New Zealand

ph: +64 7 572 2662  
fax: +64 7 578 6241  
freephone: 0800 220002  
email: [info@grosafe.co.nz](mailto:info@grosafe.co.nz)  
[www.grosafe.co.nz](http://www.grosafe.co.nz)





### AN IPM FRIENDLY, ORGANIC SOLUTION

ENSPRAY 99 is similar to sulphur in that it is a protectant fungicide, but has the advantage of working effectively in cool weather, also controls vine scale and mealybug and does not have the unpleasant odour of sulphur.

It's a great chemical for growers looking to implement IPM programs as it is very soft on predatory insects. With this in mind, **Grosafe** recently obtained certification with **BioGro®** for the use of ENSPRAY 99 in organic viticulture.

ENSPRAY 99 is New Zealand's premium quality iso-paraffinic oil ideally formulated for the biorational management of sucking pests such as mealybug and fungal diseases such as powdery mildew. ENSPRAY 99 can be applied as an early season treatment, with minimal impact on beneficial insects.

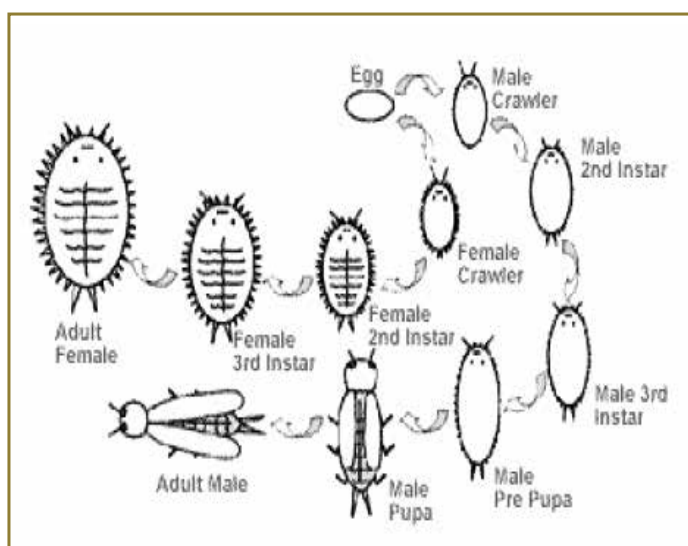
### USING ENSPRAY 99 - REGISTERED USE

ENSPRAY 99 is registered for use in grapes. Before use read the label and be familiar with the recommendations.

### THE IMPORTANCE OF APPLICATION

ENSPRAY 99 is not a magic bullet and will only control diseases and pests when used correctly. As ENSPRAY 99 is a protective chemical, thorough application is essential and higher water rates will definitely assist with achieving good coverage. Spray intervals will also need to be tightened if disease pressure is high. Caution is also needed when alternating between ENSPRAY 99 and sulphur sprays with an interval of 14 days between applications preferred.

### ENSURING EFFECTIVE & SAFE USE



- Ensure high volume sprayers are used.
- Adjust tractor speed to achieve thorough spray coverage to the point of runoff.
- Always use constant agitation in the spray tank. Never leave a spray tank of oil + water overnight.
- Always refer to product label(s) for specific details on correct use & compatibility.
- Re-entry interval: The re-entry interval (REI) for ENSPRAY 99 is 4 hours.
- Residue tolerance: ENSPRAY 99 has no residue tolerance.

Reference: The life cycle of Vine Mealy Bug (Annecke & Moran, 1982)

Targeting ENSPRAY 99 application on the first Instar is critical for activity.

**GROSAFE CHEMICALS LTD**  
20 Jean Batten Drive, Mt Maunganui, 3116  
PO Box 14 450, Tauranga 3143, New Zealand

ph: +64 7 572 2662  
fax: +64 7 578 6241  
freephone: 0800 220002  
email: [info@grosafe.co.nz](mailto:info@grosafe.co.nz)  
[www.grosafe.co.nz](http://www.grosafe.co.nz)

